



## INSTALLATION MANUAL –Feed-Through and Pole Mounts for H-1, H-2 and H-4 Housings

### Unpacking

Unpack carefully. This is mechanical equipment and should be handled with care. If an item appears to have been damaged in shipment, replace it properly in its carton and notify the shipper. If any items are missing, notify CBC America Corp (CBC). The shipping carton is the safest container in which the unit may be transported. Save it for possible future use.

### Service

If the unit ever needs repair service, the customer should contact CBC for a return materials authorization (RMA) and shipping instructions.

### Care and Maintenance

Perform routine maintenance to keep the unit dust free.

### Model Designation

WB-1 Feed-Through Wall Mount

JB-1 Feed-Through Overhang Mount

### Description

This indoor/outdoor mounting equipment is designed for fixed camera or camera housing installations up to 9kg (20lb) rated load. These models are made of lightweight aluminum and features welded construction, providing an extremely rigid camera mount. These brackets have been specifically designed for the H-1, H-2 and H-4 series housings. All mounts come fully assembled.

### Hardware Kit – JB-1 / WB-1

- 1 x Allen Wrench
- 4 x Plastic Wall Anchor
- 4 x Screw
- 2 x ¼-20 x 3/8" Pan Head Phillips Screw, Stainless Steel
- 2 x ¼" Lock Washer, Stainless Steel
- 2 x ¼" Flat Washer, Stainless Steel

### Tools Required

Drill with appropriate sized bit for fasteners used

### Certification

Camera installation should be performed by a licensed professional and conform to the National Electrical Code (NEC) and any applicable local codes.

### Installation

Determine a secure wall mounting location.

**Warning:** These mounts are designed to support a load only in a vertical direction. Mounts MUST be positioned as shown in the SPECIFICATIONS section of this manual.

1. **Cautions:** The fasteners provided in the hardware kit may not be ideal for all installations.
  - a. For a secure installation, use four 8-mm (5/16-in diameter fasteners (not included).
  - b. If bolts are used, they should extend through the mounting surface and be secured with flat washers, lock washers, and nuts on the opposite side. Each bolt must have a minimum pull-out strength of 200kg (450lbs).
  - c. If studs are used, they should be anchored in concrete or welded to a steel backer plate. Each stud must have a minimum pull-out strength of 200kt (450lbs).
  - d. If the wall mount is attached to wood or to a blind structure (with no access to the rear), each fastener must have a minimum pull-out strength of at least 200kg (450lbs).
2. Locate the four holes or stud locations using the flange as a template (four holes equally spaced on a 69.9mm (2-3/4-in) bolt circle.

3. Feed wires through the large hole in the flange or through the slot on the surface where the camera housing mounts.
4. Install the mount using bolts or studs at least 8-mm (5/16-in) in diameter.
5. To mount the camera or camera housing:
  - a. Mount camera with a ¼-20 bolt and lock washer (not furnished) in the center hole of the adjustable head.
  - b. Mount housings with three ¼-20 bolts and lock washers (not furnished).
  - c. Lock mount head in position by using the supplied 1/8-in long-arm hex wrench to tighten screws.

### Specifications

WB-1 / JB-1

Indoor/Outdoor Feed-through Mount

Maximum Load: 9kg (20lbs)

Mounting Head: Adjustable 360° Pan, 180° Tilt

Finish: Dark Mushroom Powder Coat

Approx Weight:

WB-1: 0.36 kg (0.8lb)

JB-1: 0.59 kg (1.3lb)

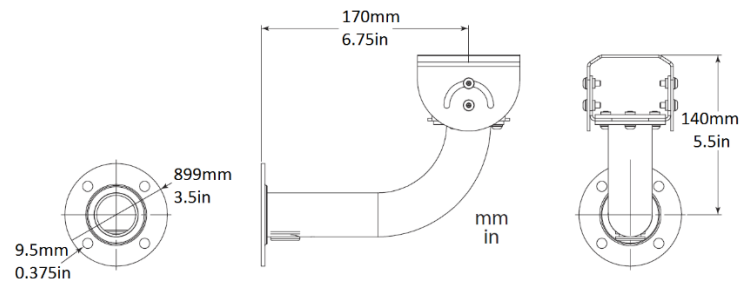


Figure 1 - WB-1

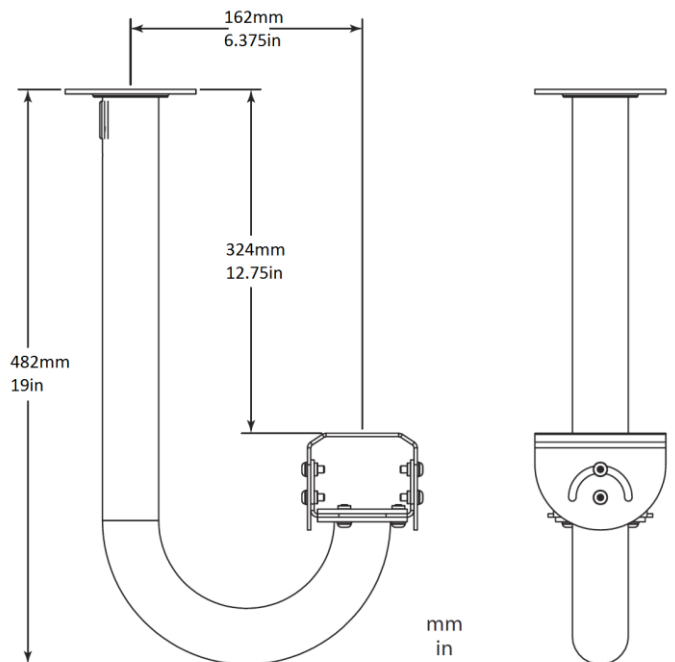


Figure 2 - JB-1