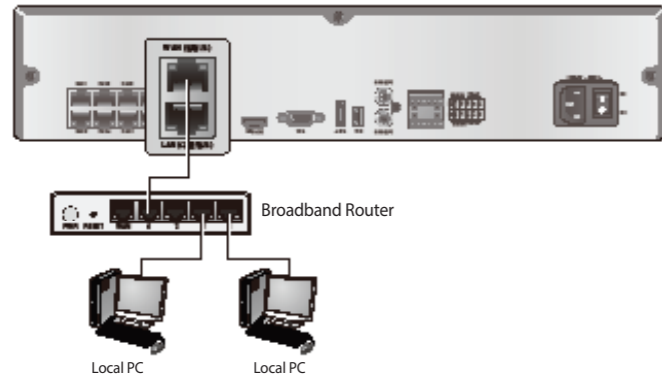
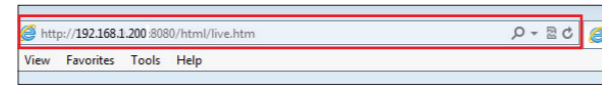


5 Network Setting

Network Connection



To access the Web Viewer

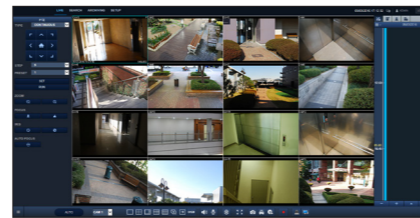
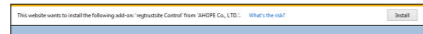


1. Open the browser and enter the IP address of NVR, or enter the URL address in the address bar.
 ex) if you use the DDNS of the NVR:
 http://00115f123456.dvlink.net:8080
 If you do use the IP address of the NVR:
 http://192.168.1.210:8080
 For more information about the router and network settings, refer to the user manual of the respective product.

USER ID

PASSWORD

LOG IN



2. When the login dialog appears, enter the user name and password.
 The default ID and password
 - User name : ADMIN
 - Password : 1234
 Be aware when you enter the ID whether it is upper or lower case
3. Click the upper warning bar to install the ActiveX before enabling the add-in function.
4. When the security warning window appears, click <Install>.
5. When the ActiveX is installed completely, you will see the live screen.
6. For more information about using the Web viewer, refer to the user manual.

6 Access to the mobile viewer

Ganz View for Android

https://play.google.com/store/apps/details?id=com.cbc.smartviewer.full.activities&hl=en_US&gl=US

Ganz View for IOS

<https://apps.apple.com/us/app/ganzview/id422857103>

Quick Guide

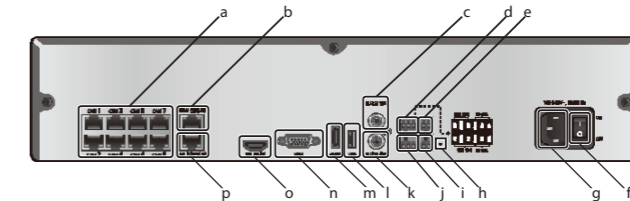
GANZ PixelMASTER 2U 8CH/16CH



If you want to download the data or a backup player, please scan the QR code or use the website (www.ganzsecurity.com)

1 Installation

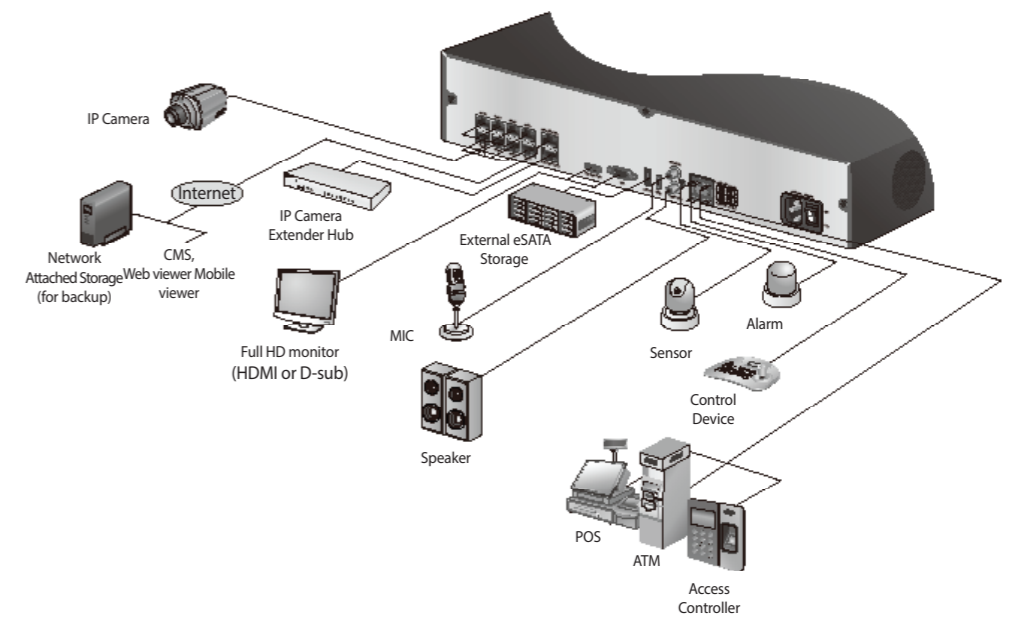
Rear View



No.	Item	Description
a	CAM1-CAM8	Ethernet ports used for connecting the network camera video and power. (Can supply power to cameras with PoE function)
b	WAN(UPLINK)	Network port for connection to the Internet, router or hub.
c	AUDIO IN	Microphone connection port.
d	ALARM OUT	Alarm output device connection port.
e	RS-485	Communications port for connecting peripherals such as system keyboard.
f	Power Switch	NVR power switch. Plug the power cord and turn this switch on.
g	100-240V - 50/60 Hz	NVR power input port.
h	RS-232C	Signal connection port for POS and ATM. 6 Scheduled to be upgraded.

No.	Item	Description
i	ALARM IN	Alarm input signal port.
j	AUDIO OUT	Port for speaker connection.
k	USB	Port for connecting USB devices. (For mouse, backup device or firmware updating)
l	eSATA	Connection port for external eSATA storage.
m	VGA	VGA video output terminal.
n	HD MONITOR	Port for connecting a full HD(1920x1080) supported monitor. Use the HDMI cable to connect with a 1080p 60Hz monitor.
o	LAN(DOWNLINK)	Exclusive Port dedicated to connect the NVR Hub. (Do not share with other device.)

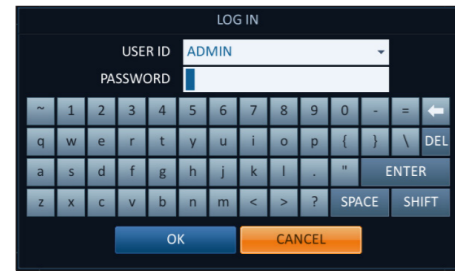
Basic Layout



- 6 This Product Supports Full HD that can connect to HDMI UHD(4K/30Hz) Monitors Only.
- 6 CCTV mode is set for camera installation mode by default and both main body and hub (optional, 16CH) support the PLUG & PLAY function. (You cannot use the CCTV mode mixed with the OPEN mode.)
- 6 In case 16CH model is set to OPEN mode, only the electrical power is supplied to the 8 cameras connected to main body and the Plug & Play function is not supported.

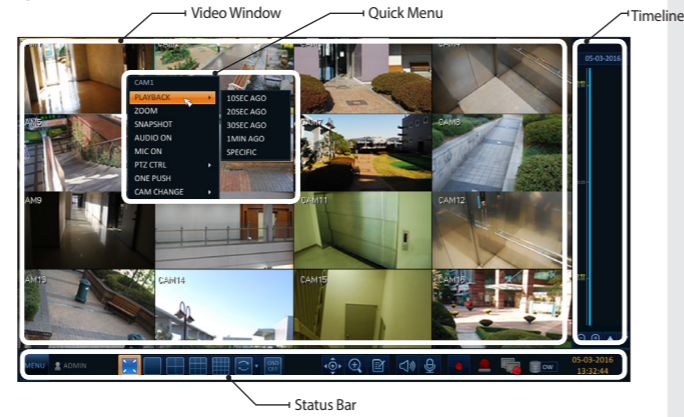
2 Getting Started

Log In



- When the system starts, the login screen appears.
- Select the user ID and enter the password. The default user ID is "ADMIN"; the default password is "1234".
- Click <OK>.
- For the security purpose, change the password right after you purchased the product.

Live Screen



Status Bar

Besides the remote control buttons, you can also use the buttons on the bottom status bar to control the NVR.

Item	Description
	Select one of the system setup, search and backup menu items before accessing it.
	Show the ID of the user who has currently logged in.
	Edit the screen layout to show the status bar and timeline at all times or only when the mouse cursor hovers on the status bar/timeline.
	Select a split mode.
	Select Auto Sequence or Special Split Mode.
	Display or hide the OSD menu on the screen.
	Move to the PTZ screen. You can control the PTZ operations of a PTZ-compliant camera on the PTZ screen.
	Move to the Digital Zoom.
	Display the log list of the recent recording events.

Item	Description
	You can use the camera supporting the audio input to listen to the audio.
	Select a camera to which the audio signal will be transferred from the connected microphone.
	Start the panic recording.
	Turns on if an event occurs. It does not turn on if no reaction to the event is yet defined. Click this to check the information of the event that occurred.
	Check if network connection is made via an external PC or mobile device. Click this to view the details of the concurrent users and to check the network connection status.
	Show the disk space information. If you have set the disk overwrite mode, it will be displayed "OW" (Over Write) from the start point of the overwriting. Click this to view the details of the disk status.
	Display the current time and date.

Quick Menu

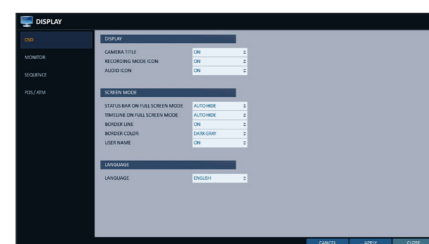
Item	Description
Channel No	Display the number of the current channel.
PLAYBACK	Start playing the video of the selected channel from the specified time.
ZOOM	Zoom the video of the selected channel.
SNAPSHOT	Capture the current live video and save it in the .jpeg format. Then, you can save the captured video in the HDD or export it to an external USB memory device.
AUDIO ON/OFF	Turn on or off the audio signal of the selected channel.
MIC On/Off	Turn on or off the microphone signal of the selected channel.
PTZ CTRL	Move to the PTZ screen.
ONE PUSH	Automatically adjusts the focus, within the camera's focus range. It is available only if supported by the connected camera.
CAM CHANGE	You can assign the selected screen to another channel.

Timeline

Item	Description
Timeline Date	Display the date of the current timeline. Click this to select a desired date of the timeline.
Zoom in/out the timeline	Expand or collapse the timeline.
Navigation through Timeline	Move to the previous or next point of time in the timeline. You can also use the mouse wheel to navigate through the timeline.
Timeline Bar	Represent the recorded data. The color of each bar indicates: ~ Green : Continuous Recording ~ Red : Alarm Recording ~ Blue : Motion Recording ~ Yellow: Panic Recording

6 Double-click the timeline to move to the Playback mode. Drag and drop it to make backup or event search for the specified area.

Language Setting



- Press [SETUP] on the remote control, or select <Menu> - <System Setup> from the status bar.
- From <System Setup> - <Display>, select <OSD>.
- Select a preferred language.
- Click <Apply>.

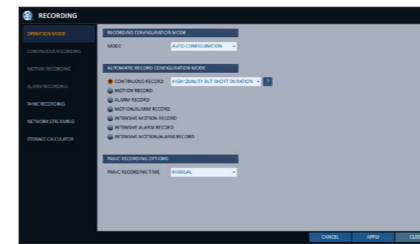
Date/Time Setting



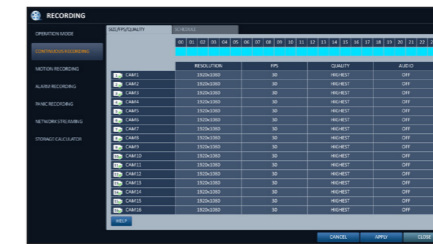
- Press [SETUP] on the remote control, or select <Menu> - <System Setup> from the status bar.
 - From <System Setup> - <System>, select <Date/Time>.
 - Specify the display format of the current time and date.
 - Click <Apply>.
- J As the existing date in the same time and date will be deleted if duplicates are found, backup the existing data for later use.

3 Recording

Automatic Recording Setting



- Press [MENU] on the remote control, and use the direction buttons to select <RECORD SETUP> and press [ENTER]. Alternatively, you can select <MENU> - <RECORD SETUP> from the status bar.
- Set <RECORD SETUP MODE> to <AUTO CONFIGURATION>.
- Select "Automatic Record Configuration Mode".

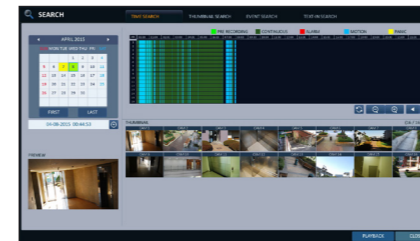


- CONTINUOUS RECORD : Records always regardless of events.
- LONG DURATION BUT LOW QUALITY : Recording will proceed in the low quality at all times. As this option will always make recording in the low quality, the recording period is the longest compared to the other record modes.

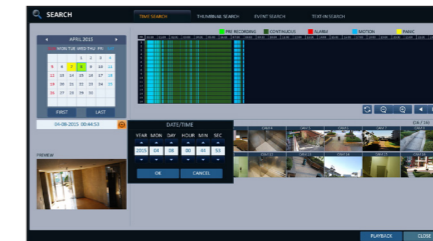
- HIGH QUALITY BUT SHORT DURATION : Recording will proceed in the best quality at all times. As this option will always make recording in the best quality, the recording period is the shortest compared to the other record modes.
 - MOTION RECORD : Recording will proceed only if a motion is detected.
 - ALARM RECORD : Recording will proceed only if an alarm event occurs.
 - MOTION/ALARM RECORD : Recording will proceed only if a motion is detected or an alarm event occurs.
 - INTENSIVE MOTION RECORD : Normally recording will be performed in a low quality. However, the quality will switch to high if a motion is detected.
 - INTENSIVE ALARM RECORD : Normally recording will be performed in a low quality. However, the quality will switch to high if an alarm event occurs.
 - INTENSIVE MOTION/ALARM RECORD : Normally recording will be performed in a low quality. However, the quality will switch to high if a motion is detected or an alarm event occurs.
- Click <APPLY>.

4 Search

Time Search



- From the <SEARCH> menu, select <TIME SEARCH>.
- Specify the search date and time from the calendar in the left corner of the screen.
- You can identify the type of the recording data by the color in the bar.

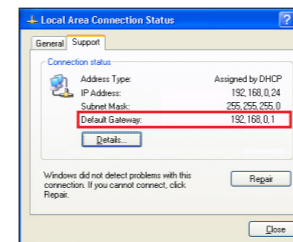


- Yellow Green (Pre recording) : The pre-recording is performed on the recording data after you set the <PRE RECORDING TIME> from <OPERATION MODE>.
- Green (Continuous) : The continuous recording is performed on the recording data.

- Red (Alarm) : The alarm event recording is performed on the recording data.
 - Blue (Motion) : The motion event recording is performed on the recording data.
 - Yellow (Panic) : The panic manual recording is performed on the recording data.
- Click to move to a desired start time in the time bar, or use the buttons at the bottom of the status bar to make search.
 - Select an item to play and click <PLAY>.
 - Click to move to a desired time, or simply double-click a desired time in the time bar to play the video data on that time.
 - For details on thumbnail search and event search, refer to the user manual.

5 Network Setting

Network Connection Setting



- Connect the [WAN(UPLINK)] port in the rear panel of the NVR to any port available except for the WAN port of the router.
- Connect the [WAN(UPLINK)] port of the router directly to the fixed IP LAN cable, or connect it to the xDSL modem.
- Check the network address information if using a network environment connected to the same router. Enter the network setting menu of the NVR and provide the IP address.

- Enter an IP address that falls in the private IP range provided by the router.
ex) 192.168.1.2~254, 192.168.0.2~254, 192.168.

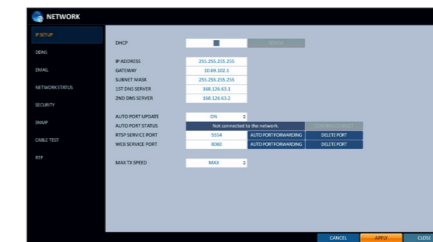
- When done, configure the port forwarding for RTSP and Web Service ports by clicking Port Forwarding. (The default value of the Web service port is 8080.)

- Click <PORT FORWARDING> for each. You will see the confirmation message. Click <APPLY> and exit the menu.

- The network settings of the NVR are complete.

- Some router models may not support UPNP properly. If you see a failure message after <PORT FORWARDING> settings, refer to the user manual of the router and configure the DMZ or port forwarding settings manually.

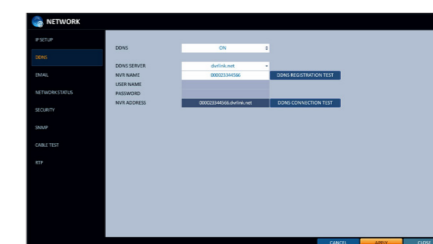
To configure the network settings



- From the main menu of the NVR, move to <SYSTEM SETUP> - <NETWORK> - <IP SETUP>.
- Uncheck the DHCP checkbox and provide the necessary information manually. (Check the network address information in the network environment settings and enter the correct information.)



- IP ADDRESS : 192.168.0.123 (enter the network IP address.)
- GATEWAY : 192.168.0.1 (enter the gateway address.)
- SUBNET MASK : 255.255.255.0 (type the subnet mask.)
- The primary, the secondary DNS server : 168.126.63.1 (enter the address of a DNS server.)



- When the network configuration is complete, proceed with the DDNS settings to allow access to the NVR from outside. From the main menu of the NVR, move to <SYSTEM SETUP> - <NETWORK> - <DDNS>.
- Rename the NVR. (The default name of the NVR is the MAC address of the NVR.) Enter a desired name in combination of characters and numbers.

- When done, click <DDNS REGISTRATION TEST> and <DDNS CONNECTION TEST> in this order. If you receive a success message, check the NVR address and click <APPLY> at the bottom.
- Check the NVR address and the Web service port in the network settings to make sure that any Internet-connected PC can access the NVR.
- If you type "mydvr" for the NVR name from the DDN item, the address of the Web viewer is "http://mydvr.dvrlink.net:8080".