

GanzView App Guide

General guide to the GanzView iPhone App

 Subject: GanzView Install/Function
 Product: GanzView
 Revision: 1.0.1
 Effective: 11/19/2012

GanzView Spec & Requirement

1. FPS (Frames Per Second) and Resolution of GanzView.
 - a. Over 3G (Cell Phone Network), figure 1
 - b. Over Wi-Fi (Home/Business Network), figure 2

Figure 1 w/ 3G Cell Phone Network

Channel	Resolution	Total FPS	FPS Per Channel
Single Display	352 X 240	12	12FPS Per Channel
Quad Display		12	3FPS Per Channel
Single Display	704 X 240	6	6FPS Per Channel
Quad Display		4	1FPS Per Channel
Single Display	704 X 480	2	2FPS Per Channel
Quad Display		2	0.5FPS Per Channel

Figure 2 w/ Wi-Fi Home/Business Network

Channel	Resolution	Total FPS	FPS / Channel
Single Display	352 X 240	12	12FPS Per Channel
Quad Display		12	3FPS Per Channel
Single Display	704 X 240	6	6FPS Per Channel
Quad Display		4	1FPS Per Channel
Single Display	704 X 480	2	2FPS Per Channel
Quad Display		2	0.5FPS Per Channel

2. Minimum iDevice/iOS requirement, figure 3.

Figure 3

Minimum Requirements	Recommended Requirements
iPhone 3GS iPod touch 3rd Generation, iOS 3.1.3	iPhone 4 iPod touch 4 th Generation iOS 6.x

DRxH GanzView App Guide

General guide to the GanzView iPhone App

Subject: GanzView Install/Function
Product: GanzView
Revision: 1.0.1
Effective: 11/19/2012

GanzView Installation

3. Find and select the “App Store” icon, figure 4.
 - a. Select “Search” from the menu options, figure 5.
 - i. Type in “GanzView” into the search box.
 - ii. Select the “\$4.99” icon to download the app.



Fig. 4

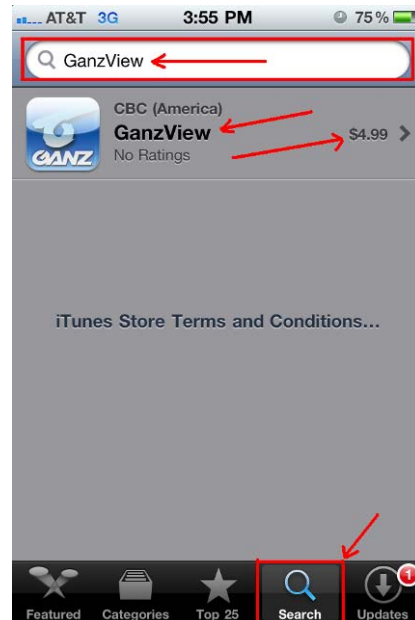


Fig. 5



Fig. 6

DRxH GanzView App Guide

General guide to the GanzView iPhone App

Subject: GanzView Install/Function
Product: GanzView
Revision: 1.0.1
Effective: 11/19/2012

GanzView Configuration

1. Once installed, tap on the GanzView app, figure 7.
 - a. The Ganz logo screen, figure 8, will appear.



Fig. 7



Fig. 8

2. Within the first screen, tap the “+” icon in the top right corner, figure 9.
 - a. Enter a Server Name, name of the DVR, which will be connected too.
 - i. Tap the name field for the keyboard, figure 10.
 - ii. Tap “Save” in the top right corner when done.

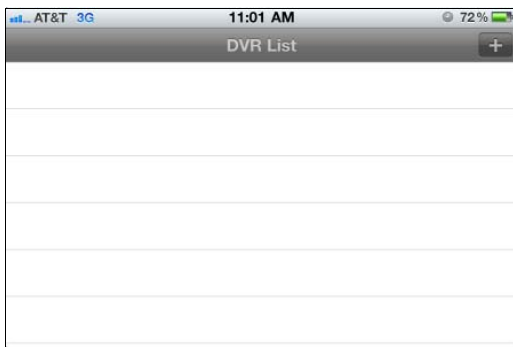


Fig. 9



Fig. 10

DRxH GanzView App Guide

General guide to the GanzView iPhone App

Subject: GanzView Install/Function
Product: GanzView
Revision: 1.0.1
Effective: 11/19/2012

GanzView Configuration: *Continued*

3. Enter the IP and Ports for the DVR, figure 11.
 - a. IP Address: Example: 192.168.1.1
 - i. Public IP if remote
 - ii. DVR's IP if local
 - iii. URL if DDNS is used
 - iv. HTTP Port: 8080 (Default)
 - v. RTSP Port: 554 (Default)
 - b. When finished, select "Save"
4. Enter the ID and Password, figure 12.
 - a. ID: ADMIN (Default)
 - b. Password: 1234 (Default)
 - c. When finish, select "Save"
5. The Server Name/DVR Name now appears in the DVR List, figure 13.
 - a. Tap the DVR entry, and the app will connect and display the first camera, figure 14.
 6. **Note: Tapping a name field will bring up the number pad, figure 15, and or the keyboard, figure 16.**



Fig. 11



Fig. 12

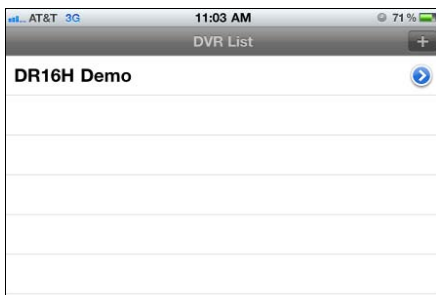


Fig. 13



Fig. 14



Fig. 15

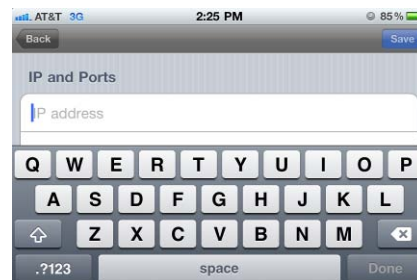


Fig. 16

DRxH GanzView App Guide

General guide to the GanzView iPhone App

Subject: GanzView Install/Function
 Product: GanzView
 Revision: 1.0.1
 Effective: 11/19/2012

GanzView Functions

7. The GanzView offers the following functionality.
 - a. Two screen division options are available.
 - i. Tap the touch screen to call up the Ganz controls, figure 16.
 - ii. Tap the required screen di vision; options appear to the left in the display.
 1. Screen di visions available are;
 - a. Single screen, figure 17
 - b. Quad screen figure 18
 - b. Swiping the screen from right to left will transition to the next video channel or channels if in quad view.



Fig. 16



Fig. 17



Fig. 18

- c. PTZ control
 - i. Selecting a camera with PTZ support brings up the PTZ controls, figure 19.
 1. Directional pad, seen right of screen, controls Pan/Tilt movement
 2. Plus/Minus slid, seen left of screen, controls Zoom function.

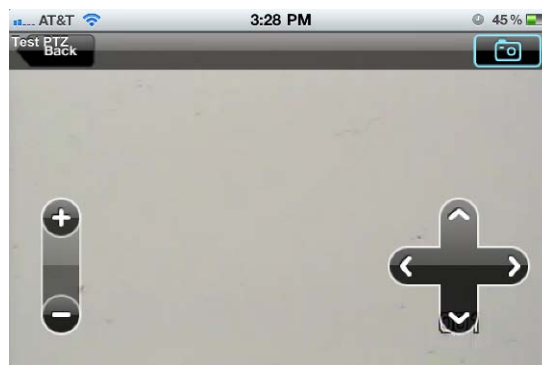


Fig. 19

DRxH GanzView App Guide

General guide to the GanzView iPhone App

Subject: GanzView Install/Function
Product: GanzView
Revision: 1.0.1
Effective: 11/19/2012

- d. Even Log:
 - i. Click on “Log View” in the on screen display, figure 16.
 - ii. Log View requires Date/Time and Filter options, figure 20
 - 1. Tap on the “Start Time” and select the required start time, figure 21.
 - 2. Tap on the “End Time” and select the required end time, figure 22.
 - 3. Select the required “Filter Options”
 - 4. Click on the “Magnifier” icon in the top right corner to search log entries, figure 23

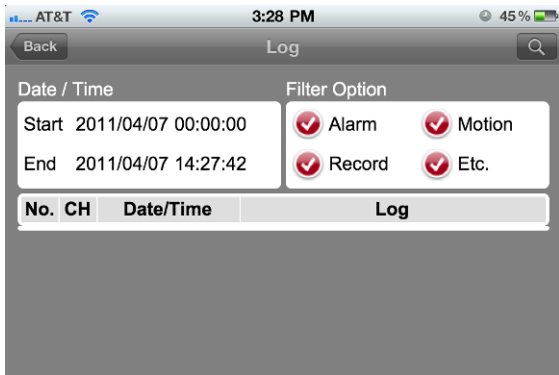


Fig. 20



Fig. 21



Fig. 22



Fig. 23

DRxH GanzView App Guide

General guide to the GanzView iPhone App

Subject: GanzView Install/Function
 Product: GanzView
 Revision: 1.0.1
 Effective: 11/19/2012

- e. Search recorded video
 - i. Tap the “Search” option, figure 16; The Search menu, figure 24, will appear.
 - 1. Tap on “Date” and select the required date, figure 25.
 - 2. Tap on “Time” and select the required time, figure 26.
 - 3. Besides the required date/time appearing, a red line will appear, figure 27.
 - 4. Click on the “Play Arrow” icon in the top right corner to begin playback.
 - a. Upon playback, the VCR style controls will appear, figure 28.
 - b. Once playback begins, the VCR controls will disappear, figure 29.

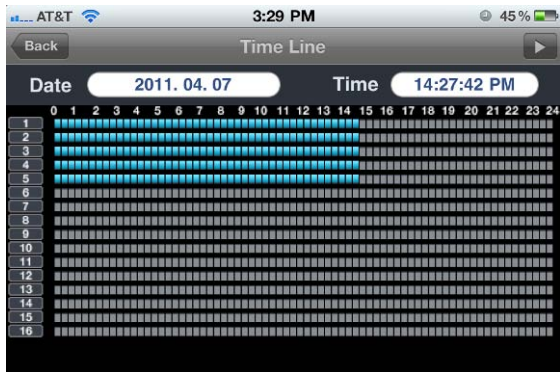


Fig. 24



Fig. 25



Fig. 26

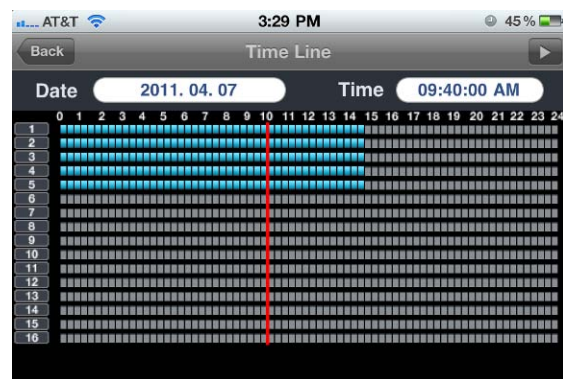


Fig. 27



Fig. 28



Fig. 29

DRxH GanzView App Guide

General guide to the GanzView iPhone App

Subject: GanzView Install/Function
 Product: GanzView
 Revision: 1.0.1
 Effective: 11/19/2012

- f. Remote Setup
 - i. GanzView allow for remote access to the DVR’s setup and configuration settings.
 - ii. To access the DVR’s setup functions, click on “Setup”, figure 30, at bottom right of display.
 - 1. GanzView will open the setup functions in a scrollable interface, figure 31.



Fig. 30



Fig. 31

- g. Disconnect function
 - i. There are two options for exiting the GanzView application.
 - ii. Select the “Disconnect” option found in the lower left corner, figure 32.
 - 1. This will disconnect from the DVR, but stay in the GanzView app.
 - iii. Pressing the home button once will exit out of the app.
 - 1. If Disconnect has not been selected, the app is in standby.
 - 2. When returning to the app, it will open in its last known state.



Fig. 32