

GanzView App Guide

General guide to the GanzView Android App

 Subject: GanzView Install/Function
 Product: GanzView
 Revision: 1.0.1
 Effective: 11/19/2012

GanzView Spec & Requirement

1. FPS(Frames Per Second) and Resolution of Ganz View
 - a. Over 3G (Cell Phone Network), figure 1
 - b. Over Wi-Fi (Home/Business Network), figure 2

Figure 1 w/ 3G Cell Phone Network

Channel	Resolution	Total FPS	FPS Per Channel
Single Display	352 X 240	12	12FPS Per Channel
Quad Display		12	3FPS Per Channel
Single Display	704 X 240	6	6FPS Per Channel
Quad Display		4	1FPS Per Channel
Single Display	704 X 480	2	2FPS Per Channel
Quad Display		2	0.5FPS Per Channel

Figure 2 w/ Wi-Fi Home/Business Network

Channel	Resolution	Total FPS	FPS Per Channel
Single Display	352 X 240	14	14FPS Per Channel
Quad Display		14	3.5FPS Per Channel
Single Display	704 X 240	7	7FPS Per Channel
Quad Display		6	1.7FPS Per Channel
Single Display	704 X 480	3	3FPS Per Channel
Quad Display		3	0.9FPS Per Channel

2. Minimum Android OS requirement, figure 3.

Figure 3

Minimum Requirements	Recommended Requirements
Android 2.1 based cell phone	Android 2.3.3 base cell phone

- a. Note: Not compatible with tablets running Android OS 3.x
- b. GanzView Lite version 1.1.0 is required for Android OS 4.x

DRxH GanzView App Guide

General guide to the GanzView Android App

Subject: GanzView Install/Function
Product: GanzView
Revision: 1.0.1
Effective: 11/19/2012

GanzView Installation: Android

1. Find and select the Android “Market” icon, figure 4.
 - a. Select the magnifying glass icon, top right corner, figure 5.
 - b. Type in “GanzView” into the search box.
 - i. Select the “GanzView ” app from the search results
 - c. Click on “Free”, the click, figure 6.
 - d. Click “OK” to confirm installation, figure 7.



Fig. 4

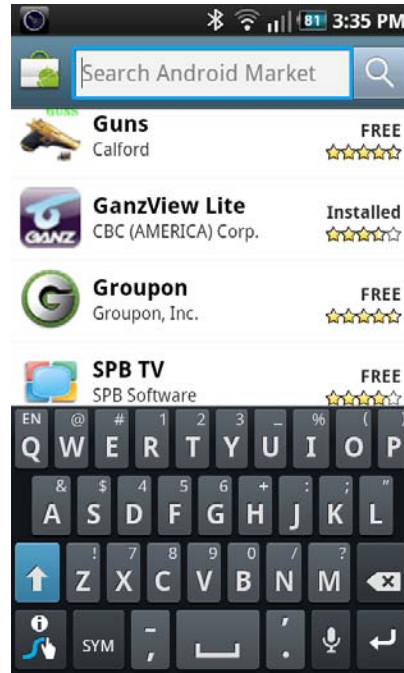


Fig. 5

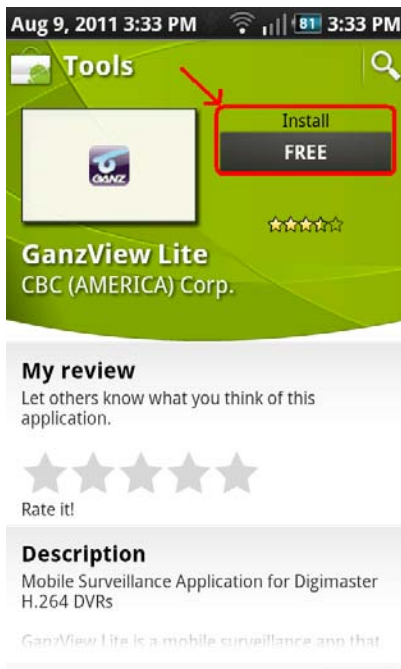


Fig. 6

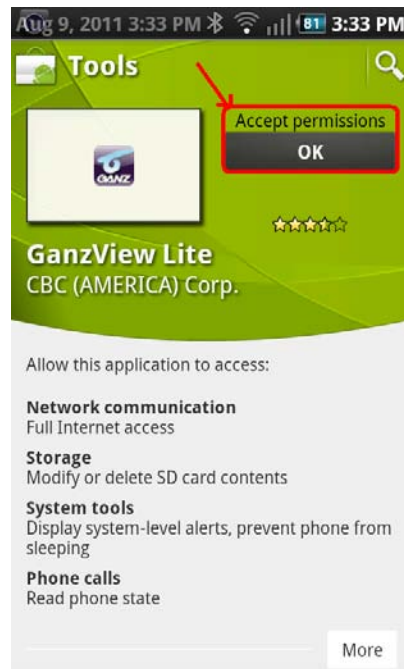


Fig. 7

DRxH GanzView App Guide

General guide to the GanzView Android App

Subject: GanzView Install/Function
Product: GanzView
Revision: 1.0.1
Effective: 11/19/2012

GanzView Configuration: Android

1. Once installed, tap on the GanzView app, figure 8.
 - a. The Ganz logo screen, figure 9, will appear.

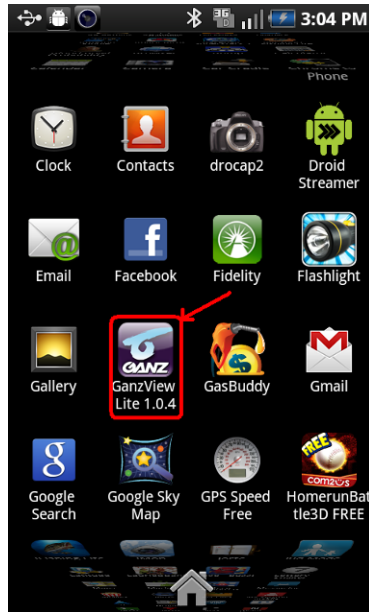


Fig 8



Fig. 9

2. Add a DVR connection
 - a. Tap on the Android phone's "Menu" button, figure 10
 - b. Tap the "+" icon at the bottom center of the screen, figure 11.



Fig. 10



Fig. 11

DRxH GanzView App Guide

General guide to the GanzView Android App

Subject: GanzView Install/Function
Product: GanzView
Revision: 1.0.1
Effective: 11/19/2012

GanzView Configuration: Android – Continued

2. Enter DVR connection information, figure 12.
 - a. Enter a Name: Name of the DVR connecting or location.
 - i. Tap the name field for the keyboard, figure 13.
 - b. Enter the IP and Ports for the DVR, figure.
 - i. IP Address: Example: 192.168.1.1
 1. Public IP if remote
 2. DVR’s IP if local
 3. URL if DDNS is used
 4. HTTP Port: 8080 (Default)
 5. RTSP Port: 554 (Default)
 - c. Enter the ID and Password.
 - i. ID: ADMIN (Default)
 - ii. Password: 1234 (Default)
 - iii. When finish, select “Save” figure 14.

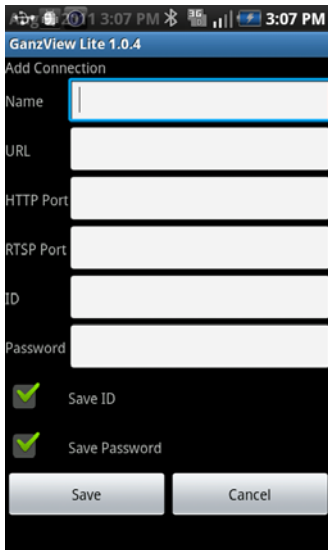


Fig. 12



Fig. 13

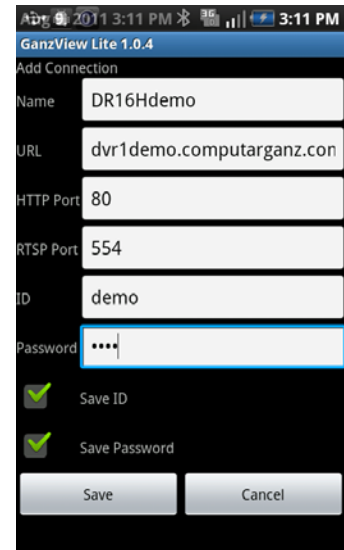


Fig. 14

DRxH GanzView App Guide

General guide to the GanzView Android App

Subject: GanzView Install/Function
Product: GanzView
Revision: 1.0.1
Effective: 11/19/2012

GanzView Configuration: Android - Continued

3. The DVR Name now appears in the DVR List, figure 15.
 - a. Tap the DVR entry,
 - b. Tap “Connect”, figure 16, and the app will connect and display the first camera, figure 17.
 - c. Note: If no ID and or Password were entered, GanzView will request one.



Fig. 15

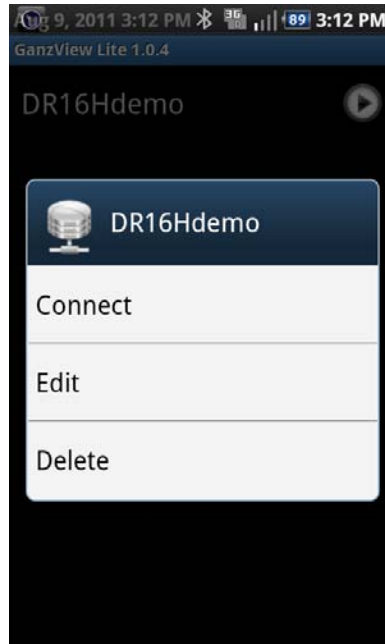


Fig. 16



Fig. 17

DRxH GanzView App Guide

General guide to the GanzView Android App

Subject: GanzView Install/Function
Product: GanzView
Revision: 1.0.1
Effective: 11/19/2012

GanzView Functions: Android

3. The GanzView offers the following functionality.
 - a. Two screen division options are available.
 - i. Tap the touch screen to call up the Ganz controls, figure 18.
 - ii. Tap the required screen division; options appear to the left in the display.
 1. Screen divisions available are;
 - a. Single screen, figure 19
 - b. Quad screen figure 20
 - b. Swiping the screen from right to left will transition to the next video channel or channels if in quad view.
 - c. Disconnect function
 - i. There are two options for exiting the GanzView application.
 - ii. Select the “Disconnect” option found in the lower left corner, figure 18.
 1. This will disconnect from the DVR, but stay in the GanzView app.
 - iii. Pressing the home button once will exit out of the app.
 1. If Disconnect has not been selected, the app is in standby.
 2. When returning to the app, it will open in its last known state.



Fig. 18



Fig. 19



Fig. 20

DRxH GanzView App Guide

General guide to the GanzView Android App

Subject: GanzView Install/Function
Product: GanzView
Revision: 1.0.1
Effective: 11/19/2012

- d. PTZ control
 - i. Selecting a camera with PTZ support brings up the PTZ controls, figure 21.
 - 1. Directional pad, seen right of screen, controls Pan/Tilt movement
 - 2. Plus/Minus slid, seen left of screen, controls Zoom function.

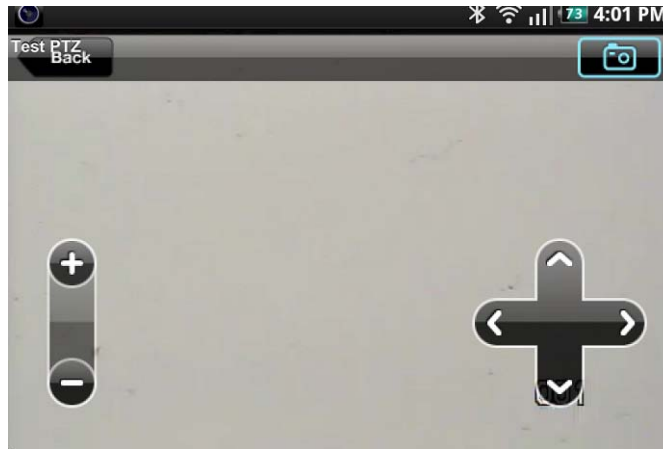


Fig. 21

- e. Even Log:
 - i. Click on “Log View” in the on screen display, figure 20.
 - ii. Log View requires Date/Time and Filter options, figure 22
 - 1. Tap on the “Start Time” and select the required start time, figure 23.
 - 2. Tap on the “End Time” and select the required end time, figure 24.
 - 3. Select the required “Filter Options”
 - 4. Click on the “Magnifier” icon in the top right corner to search log entries, figure 25

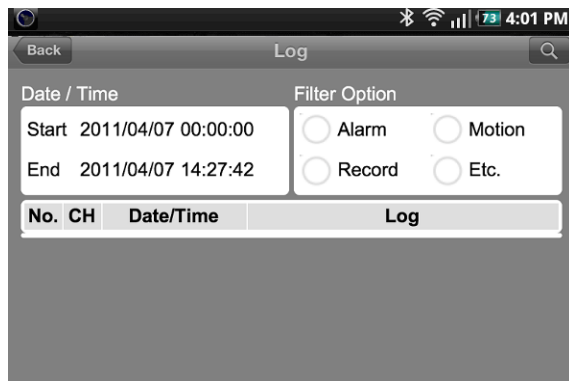


Fig. 22



Fig. 23

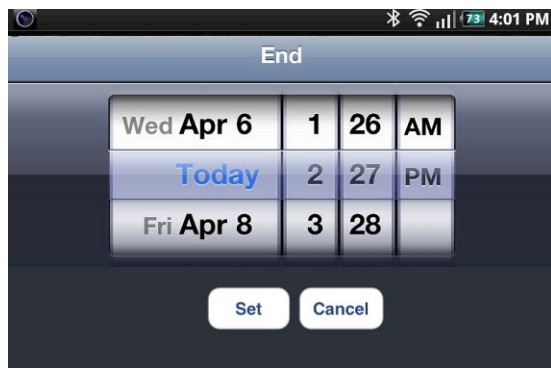


Fig. 24

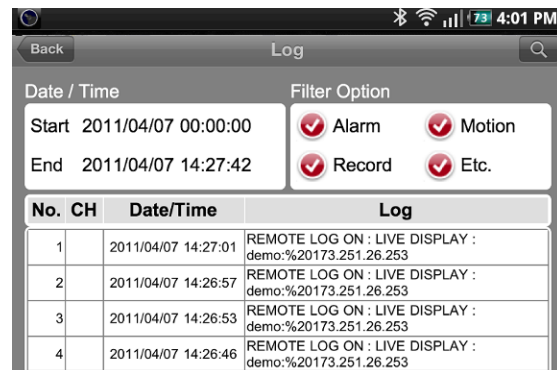


Fig. 25

DRxH GanzView App Guide

General guide to the GanzView Android App

Subject: GanzView Install/Function
Product: GanzView
Revision: 1.0.1
Effective: 11/19/2012

- f. Search recorded video
 - i. Tap the “Search” option, figure 16; The Search menu, figure 26, will appear.
 - 1. Tap on “Date” and select the required date, figure 27.
 - 2. Tap on “Time” and select the required time, figure 28.
 - 3. Besides the required date/time appearing, a red line will appear, figure 29.
 - 4. Click on the “Play Arrow” icon in the top right corner to begin playback.
 - a. Upon playback, the VCR style controls will appear, figure 30.
 - b. Once playback begins, the VCR controls will disappear, figure 31.

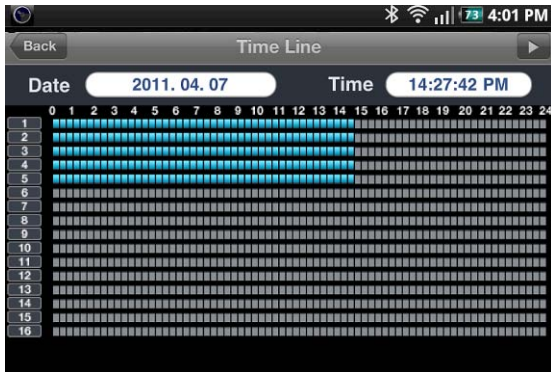


Fig. 26



Fig. 27



Fig. 28

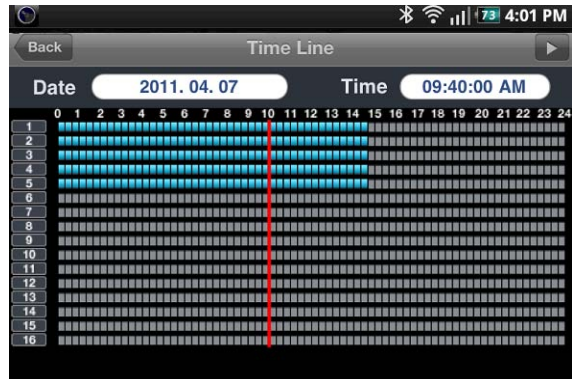


Fig. 29



Fig. 30



Fig. 31

DRxH GanzView App Guide

General guide to the GanzView Android App

Subject: GanzView Install/Function
 Product: GanzView
 Revision: 1.0.1
 Effective: 11/19/2012

- g. Remote Setup
 - i. GanzView allow for remote access to the DVR’s setup and configuration settings.
 - ii. To access the DVR’s setup functions, click on “Setup”, figure 32, at bottom right of display.
 - 1. GanzView will open the setup functions in a scrollable interface, figure 33.



Fig. 32

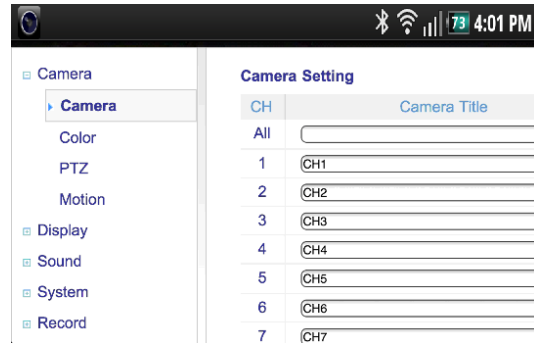


Fig. 33

- h. Disconnect function
 - i. There are two options for exiting the GanzView application.
 - ii. Select the “Disconnect” option found in the lower left corner, figure 34.
 - 1. This will disconnect from the DVR, but stay in the GanzView app.
 - iii. Pressing the home button once will exit out of the app.
 - 1. If Disconnect has not been selected, the app is in standby.
 - 2. When returning to the app, it will open in its last known state.



Fig. 34