

Date: 2017.11.10
DMS 1.4.11.32

Bug fixed sync timing issue

Date: 2017.10.25
DMS 1.4.10.32

Bug fixed when adding Device group using CSV
MPEG4 fixed where DVR live does not come up
Fixed Resource Tree of Device Panel to be fold

Date: 2017.10.16
DMS 1.4.9.32

Fix to enable ptz control based on get_setup.camera.ptzsupp api
Fix to send Teardown message when Stop Stream

Date: 2017.09.29
DMS 1.4.8.32

For accounts other than ADMIN, device configuration permissions are not applied correctly

New Feature

Fix to enable ptz control based on get_setup.camera.ptzsupp api

Date: 2017.06.30
DMS 1.4.7.32

Audio playback when converting from audio playback state to full screen is displayed on audio stop.
Bug fixed where Alarm event(NVR) not occurred occasionally
Bug fixed Hide menu (Navigator hide) function
Bug fixed where split file size does not work properly during backup
Bug fixed where crash occurred when creating an account other than ADMIN and starting the program
Bug fixed where response stop popup appears when Active-x loading is delayed,

Improvement

PTZ continuous mode added

New Feature

Enable smart search buttons according to VA camera
Add Instant Playback function

Fixed to display build date on application information popup
Add snapshot permission
Fix ptz operation speed so that it can be selected from 1 to 255

Task

Request to change Japanese language table
Change language (Instance playback -> Instant playback)
Picture stops in multi monitor view when switching view tab during multi monitor view execution
[Add NVR model] MP Model Plugin Additional work
Fix to be able to enter special password change point
Event Popup Screen Array Correction Request

Note: Playback/Remote support for DRxN MPEG series DVR was dropped. Recommended use of version 1.4.1.32 for older DRxN MPEG series DVR models.

Date: 2015.12.07
DMS 1.4.1.32

Added Ganz 3516D camera plug-in
Added camera UK customer's plug-in (UTTHS-M101SF)
Fixed wrong RTSP URL request to the camera.

Date: 2015.9.09
DMS 1.3.8.32

Release version

1. Added 2M HI3516C camera plug-in; ZN-N4NFN5, ZN-N4NVD56, ZN-M4NTFN3L, ZN-M4NTFN4L, ZN-M4NTFN9L, ZN-M4NFN3L, ZN-M4NFN4L, ZN-M4NFN9L, ZN-C4N
2. Added 10x PTZ camera plug-in; ZN-P4DT57
3. Added IR PTZ plug-in; ZN-P4NT50L, ZN-P4DT54L
4. Added 5/3M HI3516A camera plug-in; ZN-D6DMP55LHE, ZN-D6DTMP55LHE, ZN-B6DMP55HE, ZN-C6DHE, ZN-D5DMP58LHE, ZN-D5DTMP58LHE, ZN-B5DMP58HE

Date: 2015.6.30

DMS 1.3.5.32

Release version

1. Support new Revision 2 NVRs
2. Support USB PTZ Controller
3. Added new PTZ plug-in; ZN-P4N50, ZN-P4NT50, ZN-P4D54, ZN-P4DT54
4. Support registered device name sort by ascending/descending order

Date: 2015.6.25

DMS 1.3.5.32 - Beta

- 1) Improved memory leak when number of registered devices is more than 1000

Date: 2015.6.1

DMS 1.3.4.32

Release version

- 1) Improved slow page operation when hundreds of devices are registered

Date: 2015.5.18

DMS 1.3.3.32

Release version

- 1) Fixed crash bug when click Get Discovered Device button in v1.3.2

Date: 2015.4.27

DMS 1.3.2.32

Beta version

- 1) Support new platform L3 NVR (NR-4F22, 8F22, 16F22)
- 2) Added GANZ Camera Plug-in
 - Flat bubble 2.8mm lens: ZN-M4NTFN3L
 - Flat bubble 3.6mm lens: ZN-M4NTFN4L
 - Flat bubble 6mm lens: ZN-M4NTFN9L
 - CS Mount: ZN-C4N
- 3) Fixed Camera plugin search bug in previous 1.3.1.32

Date: 2015.4.27

DMS 1.3.1.32

Release version

- 1) Support PTZ Continuous menu in NVR
- 2) Plug-in Device number; Camera 16cps, DVR/NVR 3000pcs

Date: 2015.2.16

DMS_1.2.11.32

Beta for CBA only

- 1) Increased maximum number of device registration; Camera 16cps, DVR/NVR 3000pcs

Date: 2015.2.6

DMS_1.2.11

Beta version

- 1) fixed double video in DRxH
- 2) Special character (/: *? " < > |) input in the address field of device registration

Date: 2014.11.28

DMS_1.2.8

Support NVR Alarm In/Out

Increased live, playback frame performance (increased decoding performance)

Fixed grouping camera selection error in the Backup pane

Date: 2014.11.21

DMS_test_1.2.7.32

Fixed 'Select Video In' error of the backup menu in certain PC condition.

Fixed: Group device selection error of the backup menu on the 2nd Monitor

Added I-frame playback option when x2/x4 playback (requested by CBC Germany)

Continuous PTZ control thru 960H DVR

Blocking access to Playback tab to non-authorized user

Allow number of plug-in device max.1000

Added Ganz models; ZN-MDI260M-IR, ZN-MB260M, ZN-B2MTP-2

Fixed script error in Device Setting page

Automatic include of IMM4 codec when back up archived file

Date: 2014.07.30

DMS_1.2.5.32

Beta version

Developed DVR/NVR Event Log Search (Not applicable in Mpeg4 DVR)

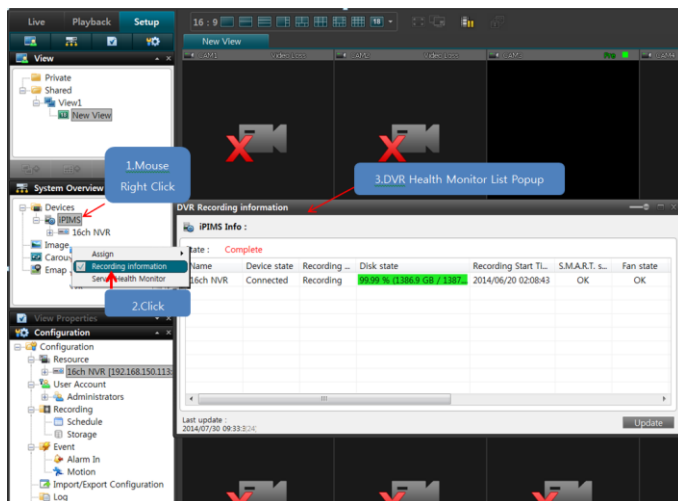
Developed DVR/NVR Health Monitor List Popup (please refer to below screen shot)

Retrieved MSVC backup data format

Deleted Power User/Standard User

In case update new DMS; Power User/Standard User is able to be deleted

In case delete previous DMS and re-install new DMS; Power User/Standard User is not included in User Account Group List



Date: 2014.03.12

DMS_1.2.0.32

Beta version

1. Fixed PTZ controlling which is connected to DRxHV
2. Fixed Pan, Tilt Zoom, Focus, Iris operation of DVR device

Date: 2013.12.30

DMS_1.1.6.32

Beta version

1. Fixed backup operation error if device is belonging to a group
2. Added feature – Create folder with device name when you operate Schedule Backup

Date: 2013.12.16

DMS_1.1.5.32

Beta version

1. Added camera plug-in: ZN-MDI243M-IR & ZN-MB243M
2. Preset start number: changed from 0 to 1

Date: 2013.10.15

DMS_1.1.3.32.exe

Released

Resolved dual error message from DVR disconnection during backup, to a single error message.
Event search Modified to be deactivated when DVR/NVR is selected during playback.
Fixed issue related to backing up file sizes that are over 2GBs.
Fixed DMS List crash that can occur during connection to an MPEG4 DVR.
Fixed problem related to the DMS Lite exit screen.
Fixed lockup issue related to using MSVC codec when an error occurs.
Fixed a wide screen output but that can happen when backing up with the MSCV codec.
Fixed memory leaks related to adding a User Account Group.
Fixed issue related to when the save path is changed from a prior selected path during backup.
Fixed pause issue that can occur during a multi camera backup.
Fixed timeline error message, related to consistent refresh of timeline in Playback.

Date: 2013.06.28

DMS_1.1.0.32.exe

Beta version

IPDevice Plugin now integrated into DMS Lite installation
DVR_NVR Plugin now integrated into DMS Lite installation
IT chip based PixelPro models now available in device selection. A
Fixed the playback/backup function related to initial login of DMS lite.
Fixed the cancellation of the Backup function in case of a DVR disconnection
Improved Live tab OSD, related to DVR Video loss.
DVR Health monitor now works with MPEG4 DVR.
Corrected the sharpness range were it read -5~5 to 0~5
Fixed multi-language display issue
Improve communications when DMS LITE connects to MPEG4 DVR.
Improve audio during playback.
Improve DMS Lite has stopped device querying during existing of application.
Improve device status is maintained as "NOT CONNECTED" after adding device in device list.
Fixed 4-digit year input related to Setup/Configuration/Log menu.
Rescaled the Backup Window to fit 1280x800 resolutions and up.
Fixed issue related to unchecking the short cut icon creation during DMS Lite installation.

Fixed issue related to the Setup/Configuration/Resource Device List scroll bar and low resolutions.
Fixed PTZ pane error message when trying to control Zoom, Focus, and Iris with MPEG4 DVRs.

Date: 2013.02.07

DMS_1.0.1555.32.exe

Beta version

IPDevice Plugin_1.17.0.32(CBC).zip (For IPCAM)

DVR_NVR Plugin_1.13.0.32(CBC).zip (For DVR)

Resolved the live display noise issue

Resolved the DVR D1 resolution de-interlacing issue from e-map

Resolved the audio issue were only audio from 15CH's can be played

Resolved showing of error message when clicking on device setting page button.

Resolved display of audio icon with all video channels when DVR's AudioIn plays.

Resolved audio backup when selected during schedule backup.

Resolved the problem of the task not registering when date format of schedule backup OS is yyyy/mm/dd.

Date: 2012.12.12

DMS_1.0.1553.32.exe

Released

IPDevice Plugin_1.12.0.32(CBC).zip (For IPCAM)

DVR_NVR Plugin_1.12.0.32(CBC).zip (For DVR)

Resolved crash issue when network or network devices are disconnected.

Introduced E-Maps function

Date: 2012.10.24

DMS_1.0.1551.32.exe

IPDevice Plugin_1.11.0.32(CBC).zip (For IPCAM)

DVR_NVR Plugin_1.10.0.32(CBC).zip (For DVR)

Resolved issues were DMS Lite would query all entries in "Device List", regardless of "Auto Connect" being set to manual.

Resolved issues were DMS Lite would query all entries in "Device List", regardless of connection state, before closing out of application.

Date: 2012.09.28

DMS_1.0.1550.32.exe

IPDevice Plugin_1.11.0.32(CBC).zip (For IPCAM)

DVR_NVR Plugin_1.10.0.32(CBC).zip (For DVR)

Resolved issue were changing to full screen, 1st stream was not kept.

Resolved crash issue when network or network devices are disconnected.

Resolved PC time change under windows XP.

Resolved backup problem when no audio data is present, but audio/video is selected.

Addition of Milliseconds option for OSD to Setup: View Properties

Resolved display crash during rendering.

Date: 2012.07.19

DMS_1.0.1545.32.exe

IPDevice Plugin_1.10.0.32(CBC).zip (For IPCAM)

DVR_NVR Plugin_1.8.0.32(CBC).zip (For DVR)

Add the auto/manual connection option

Add ZN-M2AF, ZN-MD221M, ZN-MD243M from device list (IPDEVICE Plugin)

Change the IPX NVR to NR series NVR.

Date: 2012.07.02

DMS_1.0.1544.32.exe

IPDevice Plugin_1.9.0.32(CBC).zip (For IPCAM)

DVR_NVR Plugin_1.7.0.32(CBC).zip (For DVR)

Improve the noise issue when connecting with D1 camera.

(IP Device Plugin only is updated).

Date: 2012.06.21

DMS_1.0.1544.32.exe

IPDevice Plugin_1.7.0.32(CBC).zip (For IPCAM)

DVR_NVR Plugin_1.7.0.32(CBC).zip (For DVR)

Support the schedule backup/Multi channel backup and Direct Backup.

Date: 2012.05.21
DMS_1.0.1541.32.exe

DeviceProvider_CBC_1.5.0.32.zip (For IPCAM)
BackendAdapter_CBC_1.5.0.32.zip (For DVR)
Support to register the unlimited group
Support the health check function each device.
Support to search the log list by filter.

Note:

Install the device Provider and Backend Adaptor after installing DMS.
Then you can see your all model list from DMS.
In order to check above function, you have to use 1148.32 F/W together.

Date: 2012.02.01
DMS_1.0.1521.32.exe

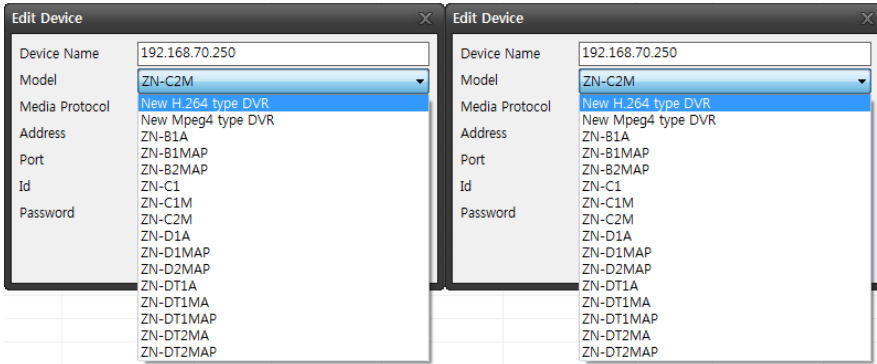
Improve the Polish language.

Date: 2011.10.21
DMS_1.0.1504.32.exe

Improve the window VISTA connection issue
Improve that Live display is not shown with Window VISTA, Window7.
When selecting the "apply" after registering the Device from Vista/Win7,
The process is not finished with Please wait...." Pop-up message.
Improved
Drag & drop issue with Window XP.
We improved it with other path.
How to see the live image.
Execute the DMS lite
Select the Live tap
From system overview, please click the connected Device with the mouse right button and assign it to specific location.

Date: 2011.07.08
DMS_0.5.1.11063001

Modify the camera model list



Add the health check function for H.264 DVR

