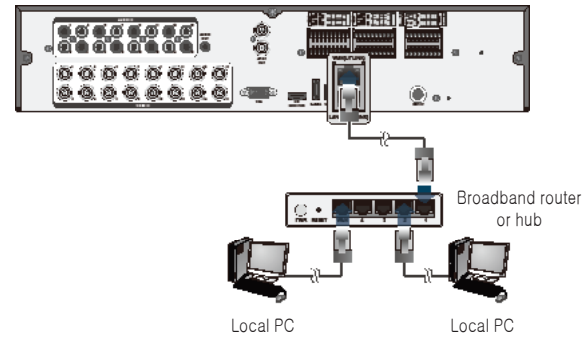
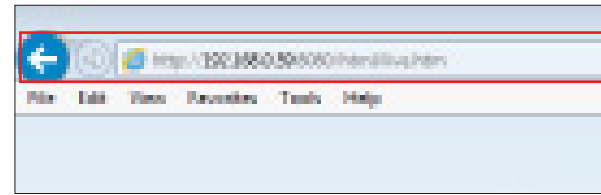


{ Network Connection

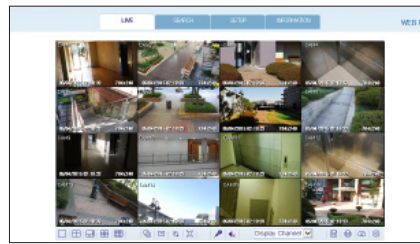
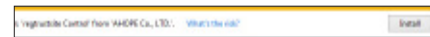
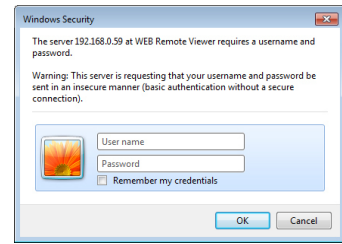


{ To access the Web Viewer



1. Open the browser and enter the IP address of DVR, or enter the URL address in the address bar.
ex) if you use the DDNS of the DVR:
http://001151123456.dvrlink.net :8080
If you do use the IP address of the DVR:
http://192.168.0.210 : 8080

For more information about the router and network settings, refer to the user manual of the respective product.



2. When the login dialog appears, enter the user name and password.
6 The default ID and password
– User name : ADMIN
– Password : 1234
Be aware when you enter the ID whether it is upper or lower case
3. Click the upper warning bar to install the ActiveX before enabling the add-in function.
4. When the security warning window appears, click <Install>.
5. When the ActiveX is installed completely, you will see the live screen.
- 6 For more information about using the Web viewer, refer to the user manual.

Quick Guide

GANZ DigiMASTER 2U

8CH/16CH

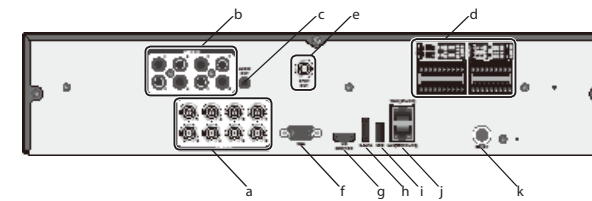
ganzsecurity.com

1
Installation

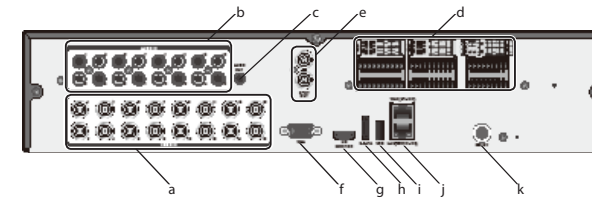
{ Rear View

Before connecting, operating or adjusting this product, read the product manual carefully and completely

8 channels

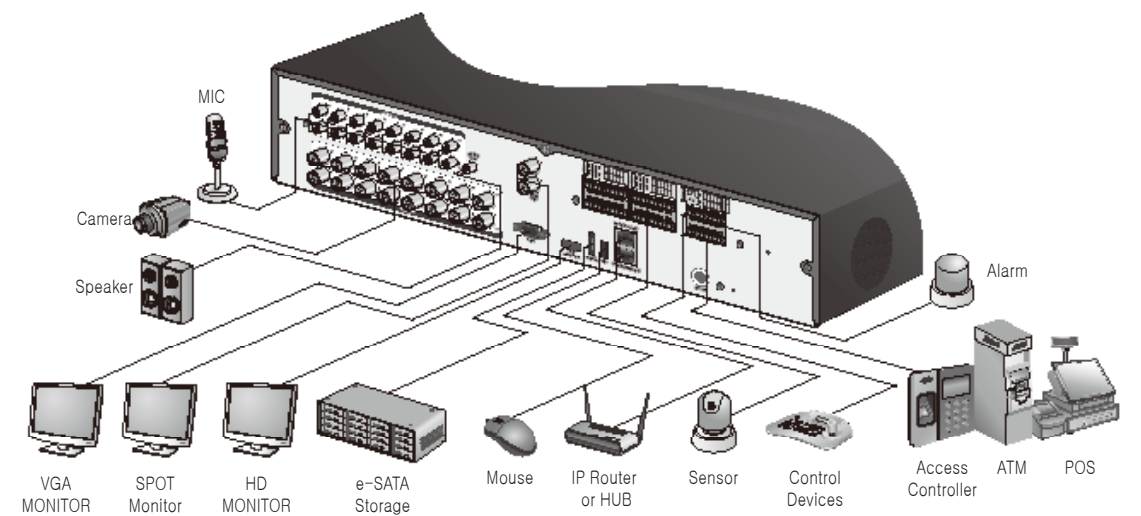


16 channels



| No. | Name | Description |
|-----|----------------|---|
| a | VIDEO IN | Video input terminal for cameras. |
| b | AUDIO IN | Port for audio input. |
| c | AUDIO OUT | Port for speaker connection. |
| d | ALARM IN | Alarm input signal port. |
| e | ALARM OUT | Alarm out signal port. O.C. (Pulled up to 5V via 10KOhm) |
| f | RELAY | Relay Terminal output port. |
| g | RS485 | Ports for communication with external devices such as PTZ camera and system keyboard. |
| h | RS232 | Connection ports for signal cables to external devices such as PTZ camera, POS and ATM devices. |
| i | SPOT OUT | Exclusive port for SPOT output only. (Connect to a TV monitor.) |
| j | VGA | VGA monitor video output port. |
| k | HD-MONITOR | HD monitor video output port. |
| l | e-SATA | Connection port for external eSATA storage. |
| m | USB | Used for connecting USB storage or mouse. |
| n | WAN(UPLINK) | Network port for connection to the Internet, router or hub. |
| o | LAN(DOWN LINK) | Port for connecting the dedicated network device. |
| p | DC12V | 6 Do not share it with other device. Power input port. |

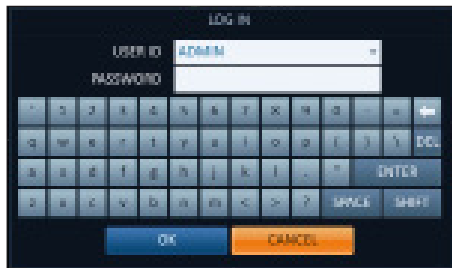
{ Basic Layout



J Since the cable quality may affect directly to the video quality depending on the distance between the camera and DVR, it is recommended to consult an authorized installer when installing the DVR.

2 Getting Started

{ Log In



- When the system starts, the login screen appears.
- Select the user ID and enter the password.
The default user ID is "ADMIN"; the default password is "1234".
- Click <OK>.
- For safe and secure use of the product, change the password after purchasing.

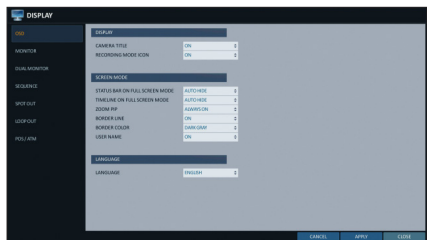
{ Status Bar You can use the buttons on the bottom status bar to control the DVR.

| Item | Description |
|------|--|
| | Select one of the system setup, search and backup menu items before accessing it. |
| | Show the ID of the user who has currently logged in. |
| | Edit the screen layout to show the status bar and timeline at all times or only when the mouse cursor hovers on the status bar/timeline. |
| | Used to select a split mode. |
| | Select Auto Sequence Mode. When a user arranges channels on desired tiles of split screen, such setting is listed for later access. Selecting a screen setup directly switches the screen mode as configured. |
| | Display or hide the OSD menus on the screen. |
| | Move to the PTZ screen. You can control the PTZ operations of a PTZ-compliant camera on the PTZ screen. |

{ Quick Menu

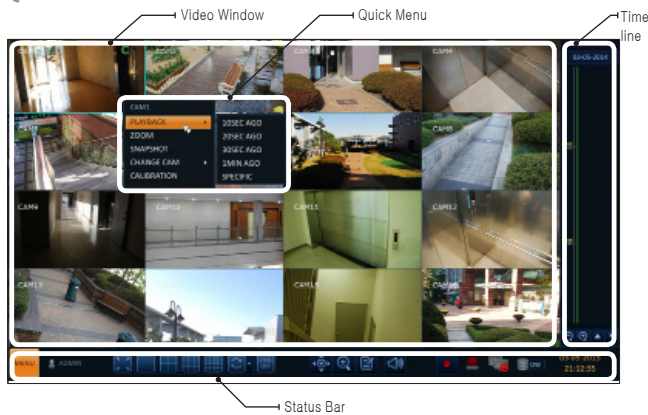
| Item | Description |
|-------------|--|
| Channel No | Display the number of the current channel. |
| PLAYBACK | Start playing the video of the selected channel from the specified time. |
| ZOOM | Move to the Digital Zoom. |
| SNAPSHOT | Capture the current live video and save it in the .jpeg format. 6 Then, you can save the captured video in the HDD or export it to an external USB memory device. |
| CAM CHANGE | You can assign the selected screen to another channel. |
| CALIBRATION | You can calibrates the camera image. |

{ Language Setting



- Select <MENU> – <SYSTEM SETUP> from the status bar.
- From <SYSTEM SETUP> – <DISPLAY>, select <OSD>.
- Select a preferred language.
- Click <APPLY>.

{ Live Screen



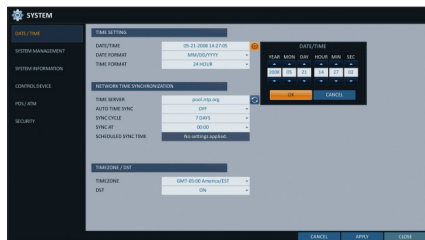
| Item | Description |
|------|---|
| | Move to the Zoom screen. |
| | Display the log list of the recent recording events. |
| | You can use the camera supporting the audio input to listen to the audio. |
| | Start the emergency recording. Blinks when the event occurs. It will not blink if no action to the event has been set. Click to view information about the event that occurred. |
| | Check if network connection is made via an external PC or mobile device. Click this to view the details of the concurrent users and to check the network connection status. |
| | Show the disk space information. If you have set the disk overwrite mode, it will be displayed "OW" (Over Write) from the start point of the overwriting. |
| | Display the current time and date. |

{ Timeline

| Item | Description |
|-----------------------------|--|
| Timeline Date | 01-01-2015 Display the date of the current timeline. Click this to select a desired date of the timeline. |
| Zoom in/out the timeline | Expand or collapse the timeline. |
| Navigation through Timeline | Move to the previous or next point of time in the timeline. You can also use the mouse wheel to navigate through the timeline. |
| Timeline Bar | Represent the recorded data. The color of each bar indicates: ~ Green : Continuous Recording ~ Red : Alarm Recording ~ Blue : Motion Recording ~ Yellow: Panic Recording |

- Double-click the timeline to move to the Playback mode. Drag and drop it to make backup or event search for the specified area.

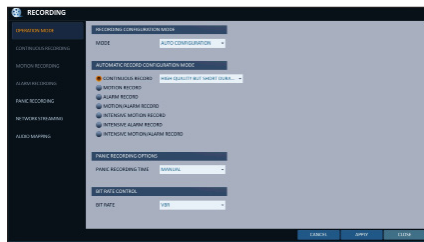
{ Date/Time Setting



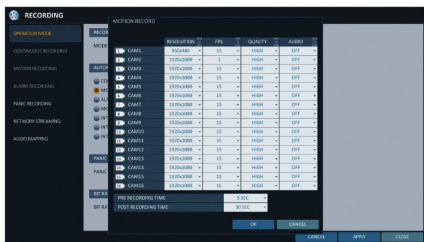
- Select <MENU> – <SYSTEM SETUP> from the status bar.
- From <SYSTEM SETUP> – <SYSTEM>, select <DATE/TIME>.
- Specify the display format of the current time and date.
J As the existing data in the same time and date will be deleted if duplicates are found, back up the existing data for later use.
- Click <APPLY>.

3 Recording

{ Automatic Recording Setting



- You can select <MENU> – <RECORD SETUP> from the status bar.
- Set <RECORD SETUP MODE> to <AUTO CONFIGURATION>.
- Select "Automatic Record Configuration Mode".

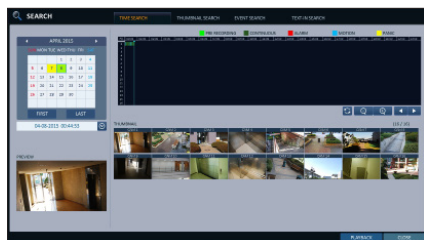


- " ALWAYS HIGH VIDEO QUALITY : Recording will proceed in the best quality regardless of the event at all times.
As this option will always make recording in the best quality, the recording period is the shortest compared to the other record modes.
- " MOTION RECORD : Recording will proceed only if a motion is detected.

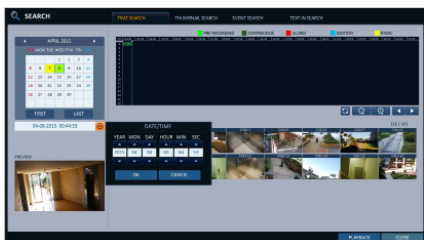
- " ALARM RECORD : Recording will proceed only if an alarm event occurs.
 - " MOTION/ALARM RECORD : Recording will proceed only if a motion is detected or an alarm event occurs.
 - " INTENSIVE MOTION RECORD : Normally recording will be performed in a low quality. However, the quality will switch to high if a motion is detected.
 - " INTENSIVE ALARM RECORD : Normally recording will be performed in a low quality. However, the quality will switch to high if an alarm event occurs.
 - " INTENSIVE MOTION/ALARM RECORD : Normally recording will be performed in a low quality. However, the quality will switch to high if an alarm event occurs or a motion is detected.
- Click <APPLY>.

4 Search

{ Time Search



- From the <SEARCH> menu, select <TIME SEARCH>.
- Specify the search date and time from the calendar in the left corner of the screen.
- You can identify the type of the recording data by the color in the bar.

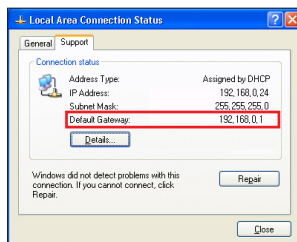


- " Yellow Green (PRE RECORDING) : The pre-recording is performed on the recording data after you set the <PRE RECORDING TIME> from <OPERATION MODE>.
- " Green (Continuous) : The continuous recording is performed on the recording data.

- " Red (Alarm) : The alarm event recording is performed on the recording data.
 - " Blue (Motion) : The motion event recording is performed on the recording data.
 - " Yellow (Panic) : The panic manual recording is performed on the recording data.
- Click to move to a desired start time in the time bar, or use the buttons at the bottom of the status bar to make search.
 - Select an item to play and click <PLAY>.
 - Click to move to a desired time, or simply double-click a desired time in the time bar to play the video data on that time.
 - For details on thumbnail search and event search, refer to the user manual.

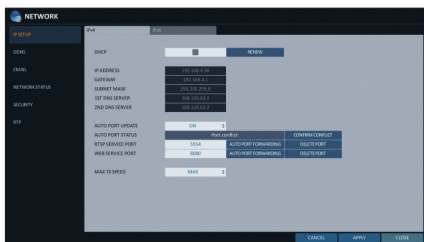
5 Network Setting

{ Network Connection Setting

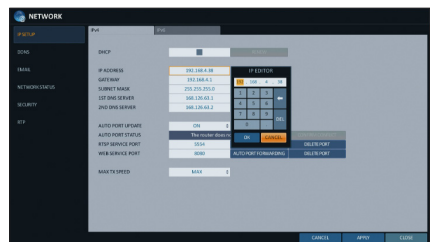


- Connect the [ETHERNET] port in the rear panel to the router.
- Connect the [ETHERNET] port of the router directly to the fixed IP LAN cable, or connect it to the ADSL modem.
- Check the network address information if using a network environment connected to the same router.
- Enter the network setting menu of the DVR and provide the IP address.

To configure the network settings



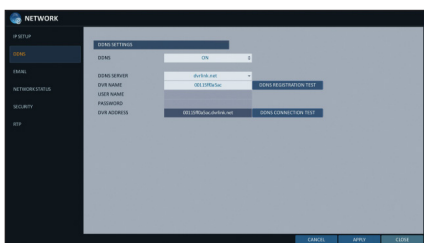
- From the main menu of the DVR, move to <SYSTEM SETUP> – <NETWORK> – <IP SETUP>.
- Uncheck the DHCP checkbox and provide the necessary information manually.
(Check the network address information in the network environment settings and enter the correct information.)



- " IP ADDRESS : 192.168.0.123 (enter the network IP address.)
- " GATEWAY : 192.168.0.1 (enter the gateway address.)
- " SUBNET MASK : 255.255.255.0 (type the subnet mask.)
- " 1ST, 2ND DNS SERVER : 168.126.63.1 (enter the address of a DNS server.)

- Enter an IP address that falls in the private IP range provided by the router.
ex) 192.168.1.2~254, 192.168.0.2~254, 192.168.

- When done, configure the port forwarding for RTSP and Web Service ports by clicking Port Forwarding. (The default value of the Web service port is 8080.)
- Click <PORT FORWARDING> for each. You will see the confirmation message. Click <APPLY> and exit the menu.
- The network settings of the DVR are complete.
- Some router models may not support UPNP properly. If you see a failure message after <PORT FORWARDING> settings, refer to the user manual of the router and configure the DMZ or port forwarding settings manually.



- When the network configuration is complete, proceed with the DDNS settings to allow access to the DVR from outside.
From the main menu of the DVR, move to <SYSTEM SETUP> – <NETWORK> – <DDNS>.
- Rename the DVR. (The default name of the DVR is the MAC address of the DVR.)
Enter a desired name in combination of characters and numbers.