

Main window

The main window displays content provided by the server, which depend upon the selected tab. Please see the corresponding sections of this document for detailed information about each mode.

The Ganz CORTROL Client application window title displays window name, display number, and computer station name.

Upper right corner - window controls



From this panel, the Ganz CORTROL Client application window can be:

- Opened in full screen mode
- Minimized to taskbar
- Maximized/restored to default size
- Closed

To enter full screen, F11 can also be used; to exit full screen mode, press *Escape* or *F11* on the keyboard.

Upper panel - tabs



The upper panel contains tabs that allow you to quickly switch between main software functionality. The following tabs may be available, depending on the software version:

- **Live:** real-time video
- **Playback:** recorded video
- **Sequence Explorer:** recorded video analysis
- **Smart Search:** recording motion video analysis
- **Alerts:** generated alerts
- **Library:** exported video and snapshots

Upper panel - server connections



The *Connection* button opens server connection setup window and displays the number of currently configured servers.

Upper right: main menu



This section contains the main application menu items.

- **File;** *Exit:* close the Ganz CORTROL Client Application
- **Edit;** *Settings:* application settings
- **View:** operation modes
 - *Always on top*
 - *Exclusivity Mode*
 - *Locked application*
- **Help;** *About:* about Ganz CORTROL Client

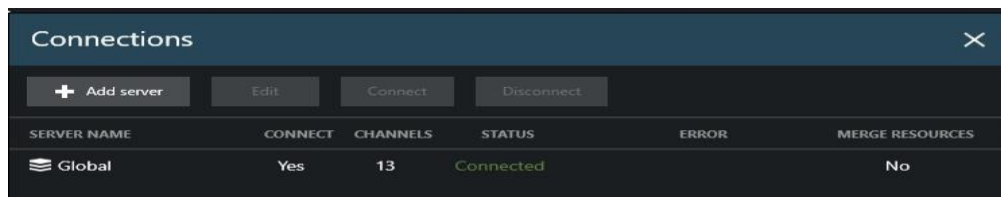
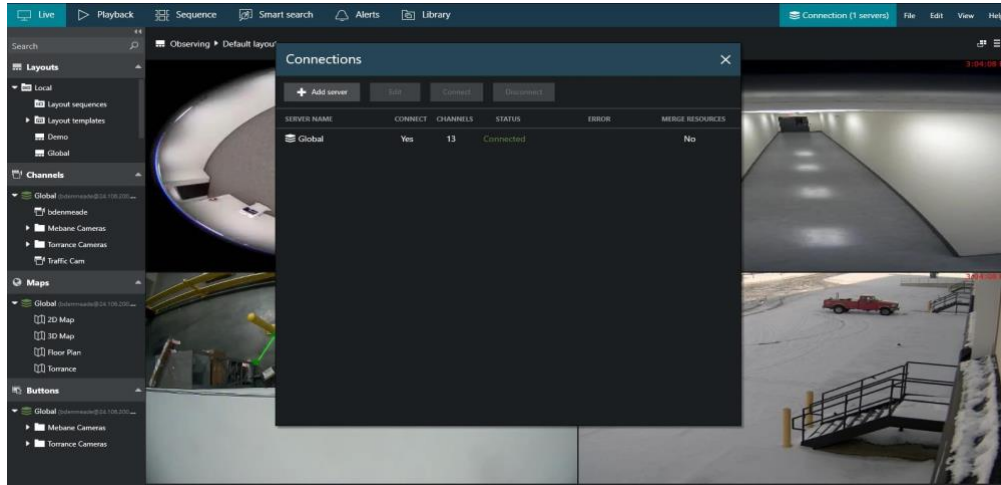
CORTROL Client Quick Guide

v1.0.2

Server Connections

If you wish to connect to a remote server, follow the steps below.

Select the *Connection* section in the upper panel to bring up the dialog box.

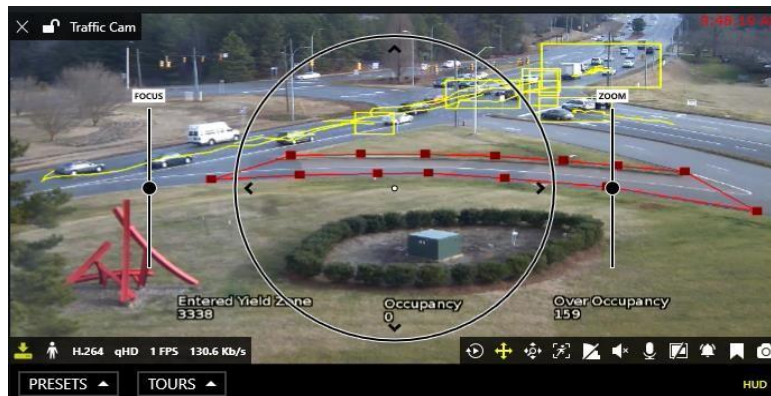


Select a server by clicking it in the item list and click *Connect* to connect with the selected server. Server resources will automatically appear in the left-hand panel.

Click *Disconnect* in this same dialog box to log out from the selected server.

Video Channels

Each video displayed in live view is placed into a 'slot', a part of the layout, called viewport.



Enabled items are highlighted yellow:

- Upper-left: general viewport controls
 - **X**: close the stream and free the viewport
 - **Lock**: unlocked/locked (Unlocked video in can be replaced by other cameras)
 - **Camera name**: Name given the camera

- Upper-right: Current time on the server from which the device originates

- Lower-left: Stream details
 - **Recording status**: X = not recording, yellow arrow = recording
 - **Motion detector status**: running = motion present, standing still = no motion
 - **Video codec of the stream**: H.264, MJPEG
 - **Picture resolution**: XVGA, 2.8MP
 - **Stream frame rate**: xFPS
 - **Stream bitrate**: xKb/s, xMb/s

- Lower-right: Controls
 - **Instant playback**: Playback of currently select time, (Default, last five minutes)
 - **PTZ toggle**: PTZ HUD and bottom panel ON/OFF
 - **DPTZ toggle**: Toggle digital PTZ control
 - **Motion grid**: ON/OFF
 - **Substream**: Auto/main/substream
 - **Incoming audio**: ON/OFF
 - **Audio OUT**: Press and hold the microphone to speak
 - **Aspect ratio**: Auto/stretch to fill viewport/original
 - **Notification panel toggle**: Toggle display of device centric notification panel
 - **Bookmark**: Bookmark current selection of time for later retrieval, review
 - **Snapshot**: Export snapshot of current image to library




Bottom: PTZ controls PRESETS ▲ TOURS ▲ HUD

- **Presets Tours:** Listing presets, with option to initiate tour
- **HUD (Heads Up Display):** ON/OFF (Centre: PTZ HUD controls)
 - Pan and tilt arrows
 - Zoom slider
 - Iris slide (If camera supported)
 - Focus slider (If camera supported)

Instant Playback

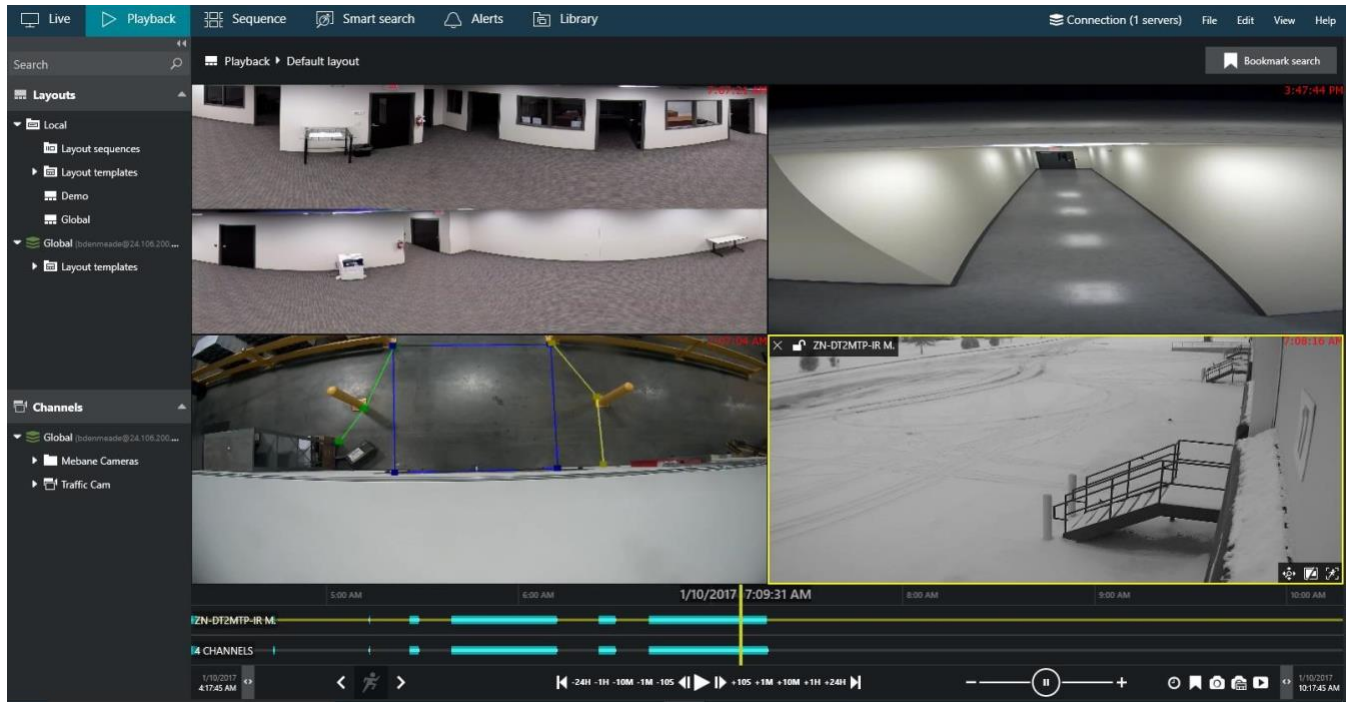


The following overlay controls are available in the instant playback mode:

- Camera Center: **Play/Pause** 
 - Drag to the center of the line to pause drag right to go fast forward
 - Drag left to rewind fast
 - Release from dragging to continue normal playback
- Bottom right: **Controls** 
 - **Place:** Click to play
 - **Clock icon:** Specify time, date/hours/minutes
 - **Bookmark:** Bookmark current selection of time for later retrieval, review
 - **Snapshot:** Snapshot of current image, saved automatically
 - **Archive:** Export loaded footage displayed in timeline
- Bottom: Navigation 
 - **Left/Right <> arrows:** Adjust loaded video time boundaries (Default, last five minutes)
 - Drag right to go forward in time drag left to go backwards in time
 - **Vertical yellow line:** Indicates current playback moment,
 - Drag it anywhere or click to move along the timeline

Playback (Archive) Mode

For security reasons, it has been made impossible to erase recordings from individual channels and/or time periods. Recordings



Select *Playback* tab to switch to archive playback mode. Your current layout will be used, and recorded video streams will be displayed for channels with enabled recording.

- **Layouts:** Double-click your desired layout to load it
- **Layout templates:** Double-click your desired layout template to load it
- **Channels:**
 - Double-click or drag and drop the channels of your choice to fill the viewports
 - First empty viewports are filled; then non-locked channels are replaced one by one)
 - Each channel can be expanded to access recordings of its main or secondary stream.
 - All footage having no associated active channels will be available under *Orphan archive tracks*.

The following viewport overlay controls are available in the playback mode, upon selection of a viewport:

- Upper left:
 - **X:** close the stream and free the viewport
 - **Lock:** unlocked/locked (Unlocked video in this viewport can be replaced by other cameras)
 - **Camera name:** Name given the camera
- Lower-right: **Controls**
 - **DPTZ toggle:** Toggle digital PTZ control
 - **Aspect ratio:** Auto/stretch to fill viewport/original
 - **Motion grid:** ON/OFF

Playback timeline



Right below the video stream, the **Timeline** is displayed:

- **Time intervals:** Show the timeline scale;
 - Click and drag left/right to move the timeline
- The video footage outline is shown twice:
 - **Upper timeline:** Contents of currently selected stream, with corresponding channel name
 - **Lower timeline:** Content summary for all channels currently present in the viewport layout
 - **White line:** Indicates recorded video data
 - **Cyan line:** (A little bit wider than the white line) indicates recorded motion data
 - **Blue line:** (A little bit wider than the cyan line) indicates recorded incoming audio data
 - **Yellow vertical line:** Denotes current playback position

Playback Navigation controls



The **playback navigation controls** are located at the bottom of the window:

- **Timestamps:** Timeline start and stop
- **Left/Right <> arrows:** Adjust the loaded footage time boundaries (Default, last five minutes)
 - Drag right to go forward in time drag left to go backwards in time
- **Motion Search:** < > Left/Right <> arrows move forward or back to next recorded motion
- **Playback Navigation:**
 - Use the *Play/Pause* button to start playback
 - Use the <> arrows near the *Play* button to go one frame back/forward
 - -/+ steps: click to go back/forward with a step of 5 seconds, 1 minute, 1 hour or 24 hours
 - |< >| arrows: go to the very beginning/very end of the footage
- **Playback speed:**
 - Drag the blob to adjust playback speed from +/-0.5x to +/-32x
 - The *Pause* button duplicates the main pause control
- **Clock icon:** Specify time, date/hours/minutes
- **Bookmark:** Create bookmark for later retrieval, review
- **Snapshot:** Snapshot of current image, saved automatically
- **Multi-Snapshot:** Snapshot of all channels currently present in the viewport layout
- **Archive:** Export loaded footage displayed in timeline
 - Option of multi-channel, or single channel archive export